





14th Flying Training Wing



Produce Pilots, Advance Airmen, Feed the Fight



UAS Ops & Columbus AFB 14 FTW Safety

Approved Release by 14 FTW Public
Affairs



Overview



Produce Pilots, Advance Airmen, Feed the Fight

- **Mid-Air Collision Avoidance (MACA)**
 - Columbus AFB Airspace
 - Columbus AFB Aircraft
- **UAS: A Growing Threat**
 - FAA Guidance
- **How you can Help**
- **Questions?**



Columbus Air Force Base



Produce Pilots, Advance Airmen, Feed the Fight

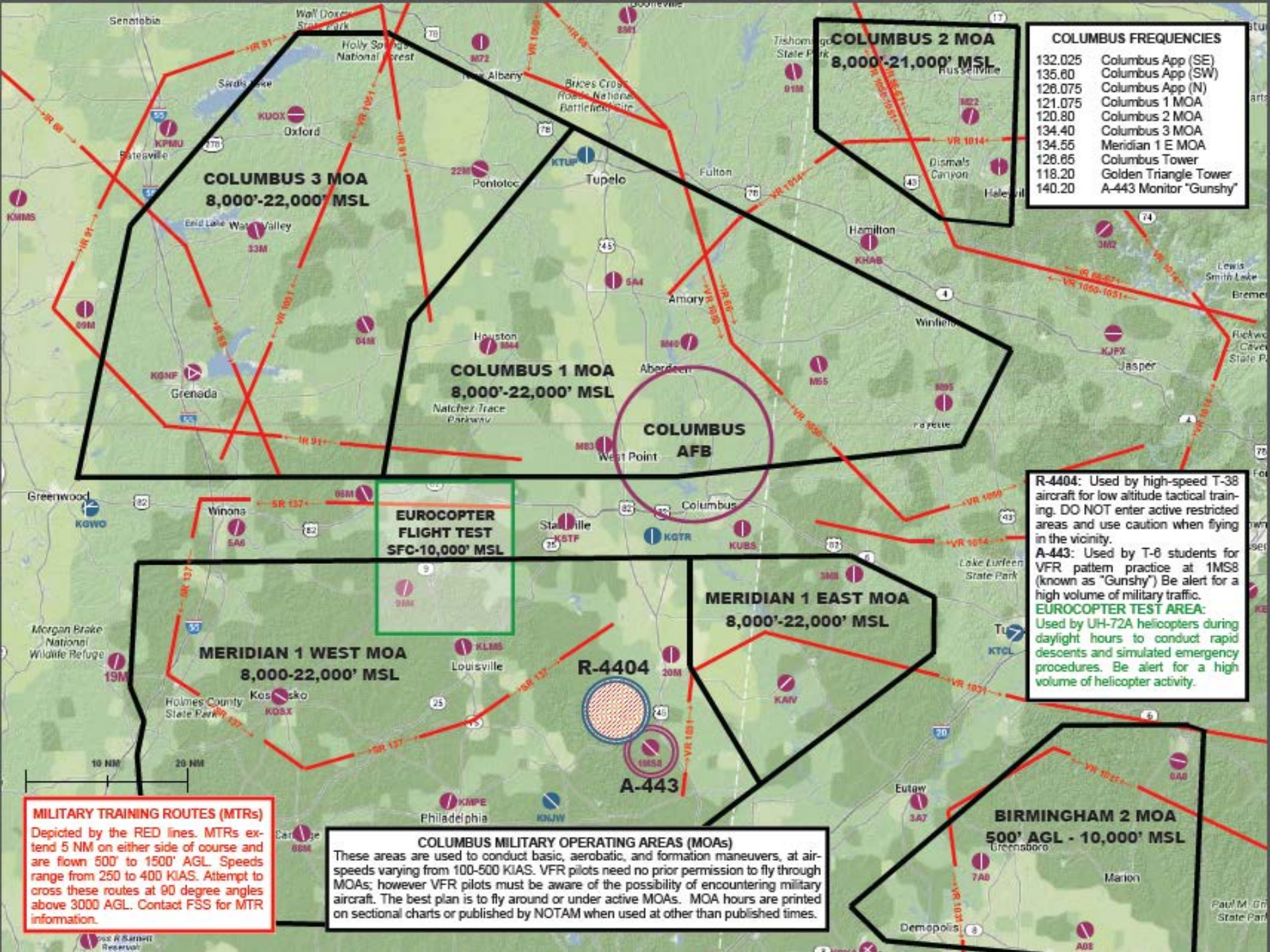


BLAZE



Produce Pilots, Advance Airmen, Feed the Fight





COLUMBUS 3 MOA
8,000'-22,000' MSL

COLUMBUS 1 MOA
8,000'-22,000' MSL

COLUMBUS 2 MOA
8,000'-21,000' MSL

COLUMBUS FREQUENCIES	
132.025	Columbus App (SE)
135.60	Columbus App (SW)
128.075	Columbus App (N)
121.075	Columbus 1 MOA
120.80	Columbus 2 MOA
134.40	Columbus 3 MOA
134.55	Meridian 1 E MOA
126.65	Columbus Tower
118.20	Golden Triangle Tower
140.20	A-443 Monitor "Gunshy"

COLUMBUS AFB

EUROCOPTER FLIGHT TEST
SFC-10,000' MSL

MERIDIAN 1 EAST MOA
8,000'-22,000' MSL

MERIDIAN 1 WEST MOA
8,000'-22,000' MSL

R-4404

A-443

BIRMINGHAM 2 MOA
500' AGL - 10,000' MSL

COLUMBUS MILITARY OPERATING AREAS (MOAs)
These areas are used to conduct basic, aerobatic, and formation maneuvers, at airspeeds varying from 100-500 KIAS. VFR pilots need no prior permission to fly through MOAs; however VFR pilots must be aware of the possibility of encountering military aircraft. The best plan is to fly around or under active MOAs. MOA hours are printed on sectional charts or published by NOTAM when used at other than published times.

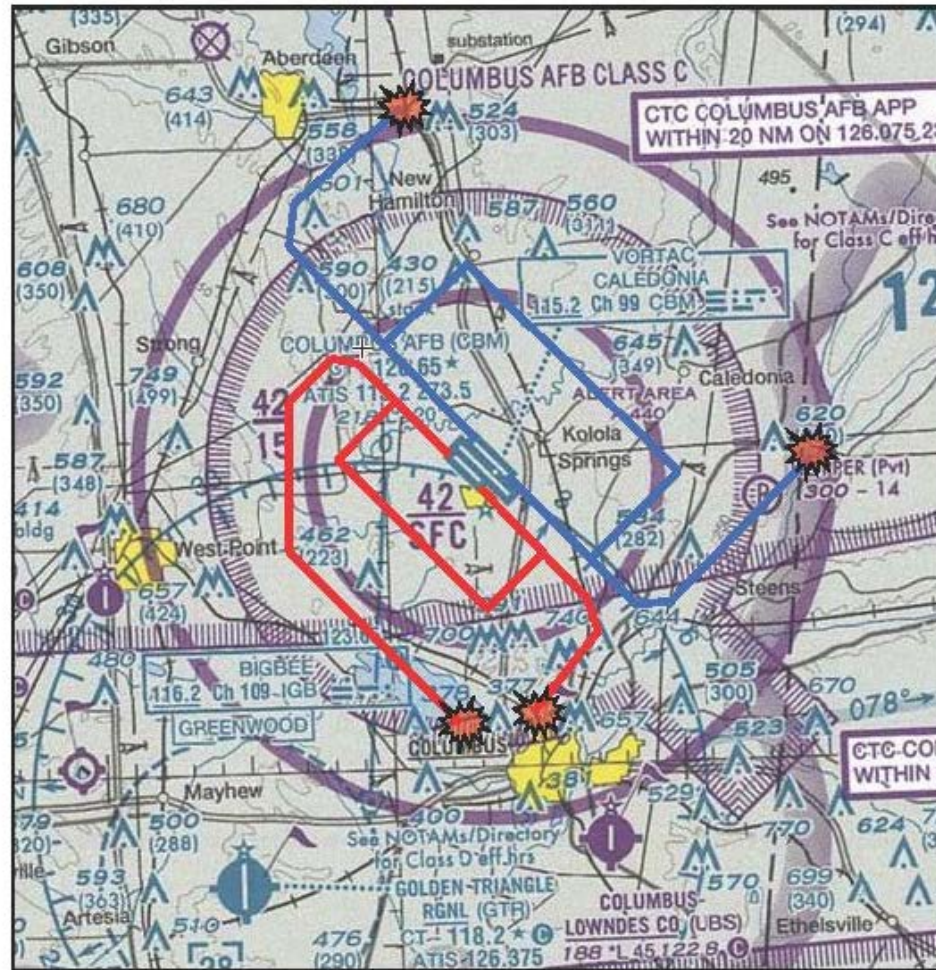
MILITARY TRAINING ROUTES (MTRs)
Depicted by the RED lines. MTRs extend 5 NM on either side of course and are flown 500' to 1500' AGL. Speeds range from 250 to 400 KIAS. Attempt to cross these routes at 90 degree angles above 3000 AGL. Contact FSS for MTR information.

R-4404: Used by high-speed T-38 aircraft for low altitude tactical training. DO NOT enter active restricted areas and use caution when flying in the vicinity.
A-443: Used by T-6 students for VFR pattern practice at 1MS8 (known as "Gunshy") Be alert for a high volume of military traffic.
EUROCOPTER TEST AREA: Used by UH-72A helicopters during daylight hours to conduct rapid descents and simulated emergency procedures. Be alert for a high volume of helicopter activity.



Produce Pilots, Advance Airmen, Feed the Fight

T-6 Pattern (1000' AGL)



BLAZE



MACA



Produce Pilots, Advance Airmen, Feed the Fight

Beechcraft T-6A Texan II

Max Speed – 316 kts

Cruise/Pattern airspeed – 200 kts

Final airspeed – 110 kts



Northrop T-38 Talon

Max Speed – 814 kts/ 1.23 Mach

Cruise/Pattern airspeed – 300 kts

Final airspeed – 160 kts



Beechcraft T-1A Jayhawk

Max Speed – 330 kts

Cruise airspeed – 250 kts; Pattern airspeed – 180 kts

Final airspeed – 120 kts

BLAZE

14:28:12

179

1.1

5

5



159

4.870



4.2 0.26
3.5
GUN

MG100

R 4860

02.1> 02
04 6VXXX





UAS/Drones



Produce Pilots, Advance Airmen, Feed the Fight



BLAZE



UAS



Produce Pilots, Advance Airmen, Feed the Fight

- The Threat
- FAA Guidance/Regulations
- How you can help



BLAZE

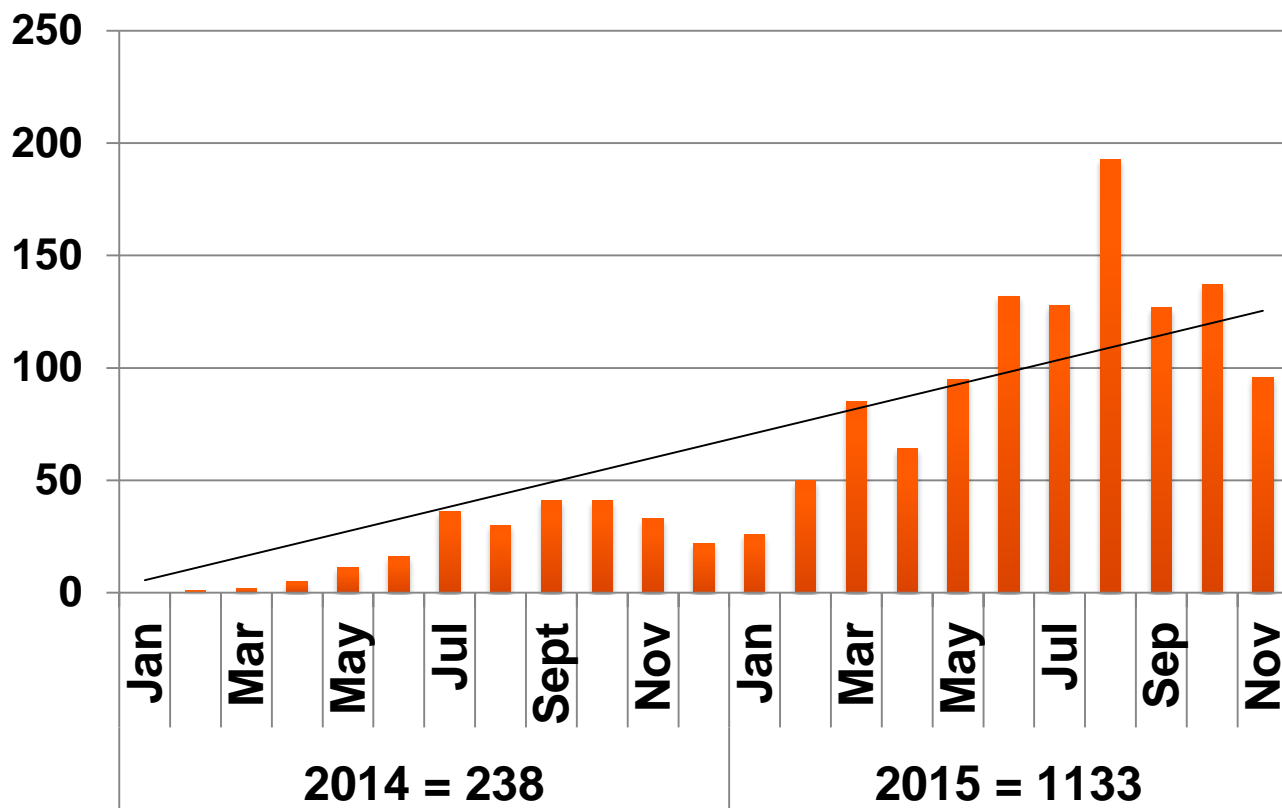


The Threat

Produce Pilots, Advance Airmen, Feed the Fight

FAA Unmanned Aircraft Reports

CAO 9 Dec 15



- **2014: 200K UAS sold**
- **2015: 1.6 mil sold**
- **2016: ???**



FAA Guidance



Produce Pilots, Advance Airmen, Feed the Fight

➤ Commercial

- Must have a 333 exemption with FAA

➤ Hobbyist

- Must ***notify*** any airfields within 5 NMs
- Stay below 400' AGL & in operator's LOS
- Do not interfere with manned operations
- Stay away from:
 - Crowds (stadiums, concerts, etc.)
 - Sensitive areas (power plants, correctional facilities, etc.)
- UAV must weigh less than 55 lbs (registered if above 0.55 lbs)

BLAZE



FAA Guidance



Produce Pilots, Advance Airmen, Feed the Fight

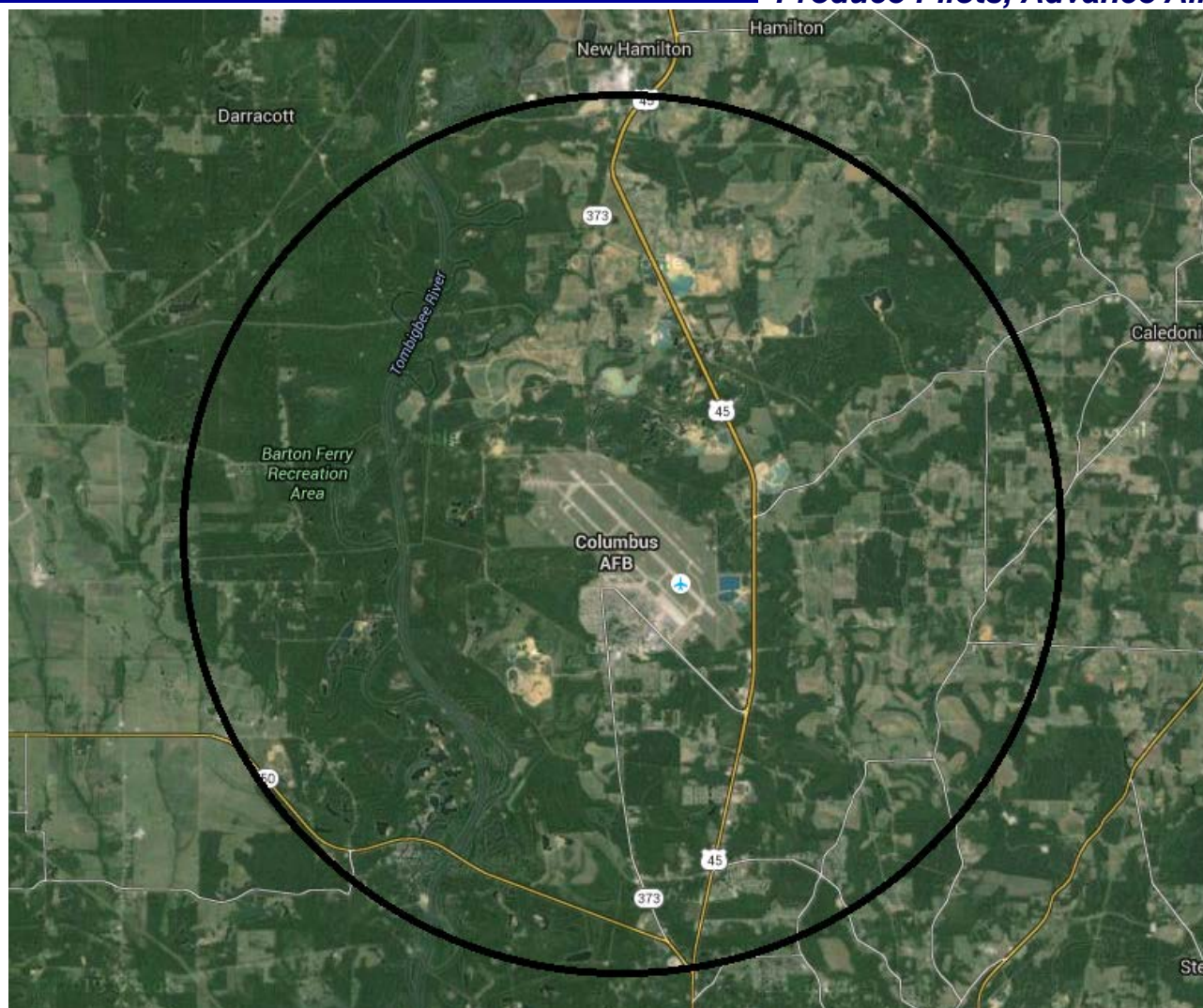
➤ Questions?

- <http://www.faa.gov/uas/>
- <http://knowbeforeyoufly.org/>
- Download the FAA's B4UFLY App on your phone



Columbus AFB 5 Mile Ring

Produce Pilots, Advance Airmen, Feed the Fight



BLAZE



Northern Landmark



Produce Pilots, Advance Airmen, Feed the Fight



Intersection of Kerr McGee Rd and Old Hwy 45 or Tronox Inc

~5.1 mi north of AFB

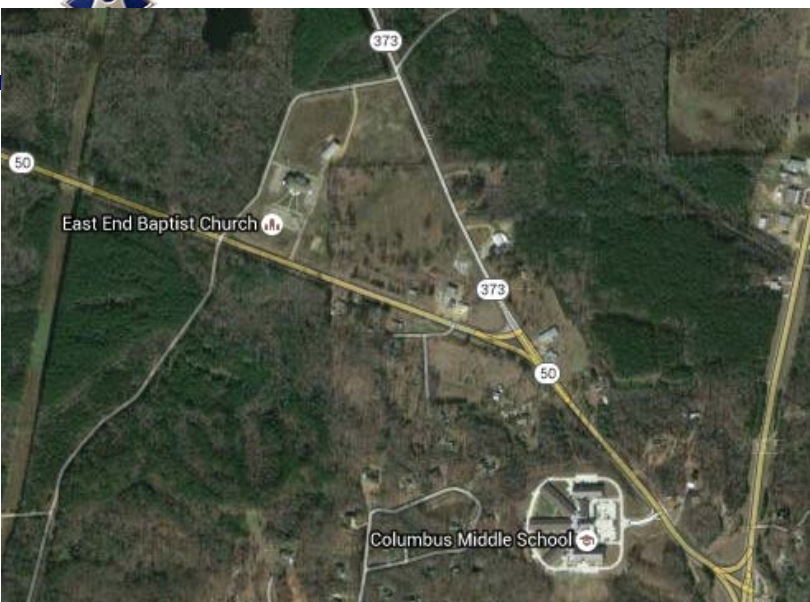




Southern Landmark



Produce Pilots, Advance Airmen, Feed the Fight



**East End Baptist Church between
Hwy 373 and Hwy 50**

~5.0 mi south of AFB

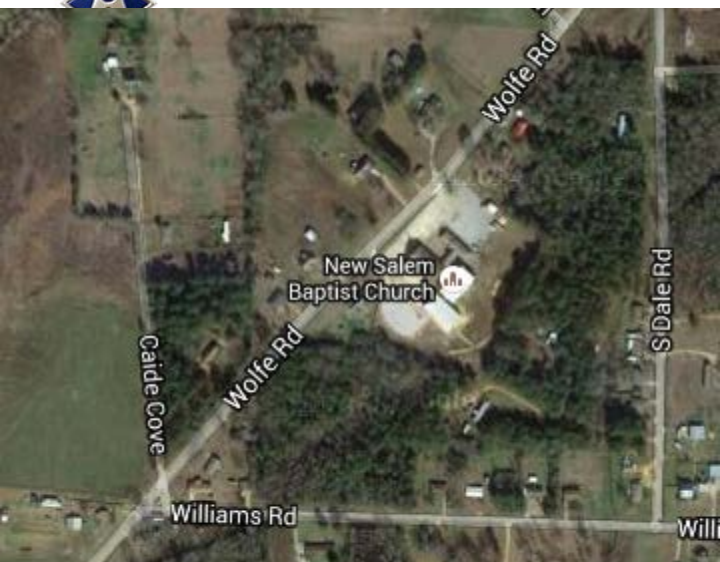




Eastern Landmark



Produce Pilots, Advance Airmen, Feed the Fight



**New Salem Baptist Church off
Wolfe Rd**

~5.6 miles east of AFB





Western Landmark



Produce Pilots, Advance Airmen, Feed the Fight



**Town Creek Missionary
Baptist Church**
~5.5 mi west of AFB





How you can help



Produce Pilots, Advance Airmen, Feed the Fight

- **Abide by FAA guidelines**
- **Educate your friends**
- **Report them if you see them**
- **Low Levels (MTRs)**
 - Sectionals
 - Multiple sources online
 - Call (662) 434-SAFE



BLAZE



Questions?

Produce Pilots, Advance Airmen, Feed the Fight



Columbus AFB Flight Safety

(662) 434-2526/2525/2842

BLAZE

